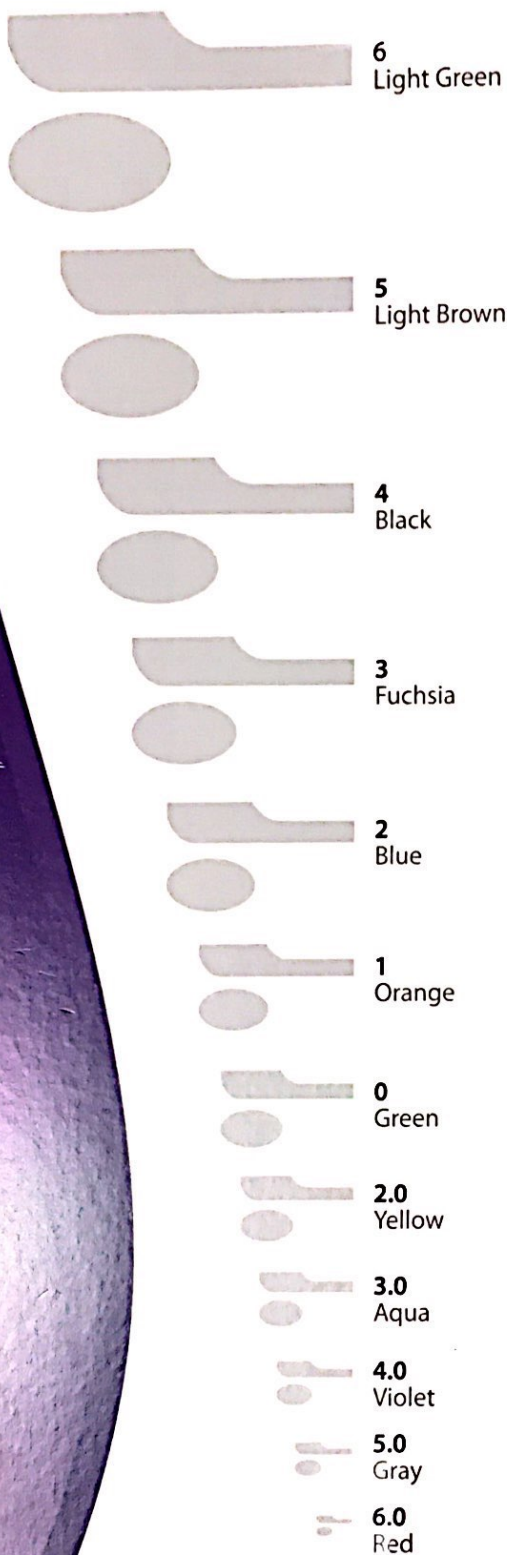


PHANTOM SERIES

CERVICAL AND LUMBAR CURETTES



**TeDan Surgical
Innovations**

Features

- Phantom Cervical and Lumbar Curettes available in:
 - Straight
 - Angled
 - Angled 90°
 - Reverse Angled
- Color coded for easy identification of sizes
- 8 Cervical Curettes per set and 12 Lumbar Curettes per set
- Cervical Curettes are 10" in overall length
- Lumbar Curettes are 13.75" in overall length



CS-0150 – CS-0193
Phantom Cervical Curettes

LS-0140 – LS-0191
Phantom Lumbar Curettes



CS-0205 and LS-0703
Curette Case holds 12 curettes.
Curettes sold separately.







Phantom Series

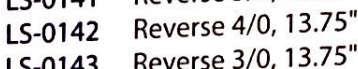

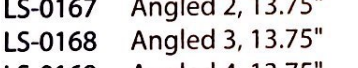
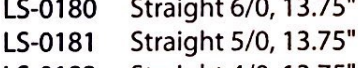
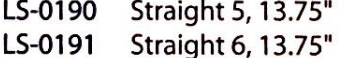
Cervical and Lumbar Curettes

Phantom Cervical and Lumbar Curettes come in a wide variety of sizes and styles to meet your surgical needs.

PHANTOM CERVICAL CURETTES

	CS-0150	Reverse 6/0, 10"	Red
	CS-0151	Reverse 5/0, 10"	Gray
	CS-0152	Reverse 4/0, 10"	Violet
	CS-0153	Reverse 3/0, 10"	Aqua
	CS-0154	Reverse 2/0, 10"	Yellow
	CS-0155	Reverse 0, 10"	Green
	CS-0156	Reverse 1, 10"	Orange
CS-0157	Reverse 2, 10"	Blue	
	CS-0162	Angled 6/0, 10"	Red
	CS-0163	Angled 5/0, 10"	Gray
	CS-0164	Angled 4/0, 10"	Violet
	CS-0165	Angled 3/0, 10"	Aqua
	CS-0166	Angled 2/0, 10"	Yellow
	CS-0167	Angled 0, 10"	Green
	CS-0168	Angled 1, 10"	Orange
CS-0169	Angled 2, 10"	Blue	
	CS-0174	Straight 6/0, 10"	Red
	CS-0175	Straight 5/0, 10"	Gray
	CS-0176	Straight 4/0, 10"	Violet
	CS-0177	Straight 3/0, 10"	Aqua
	CS-0178	Straight 2/0, 10"	Yellow
	CS-0179	Straight 0, 10"	Green
	CS-0180	Straight 1, 10"	Orange
	CS-0181	Straight 2, 10"	Blue
	CS-0186	90° 6/0, 10"	Red
	CS-0187	90° 5/0, 10"	Gray
	CS-0188	90° 4/0, 10"	Violet
	CS-0189	90° 3/0, 10"	Aqua
	CS-0190	90° 2/0, 10"	Yellow
	CS-0191	90° 0, 10"	Green
	CS-0192	90° 1, 10"	Orange
	CS-0193	90° 2, 10"	Blue

PHANTOM LUMBAR CURETTES

	LS-0140	Reverse 6/0, 13.75"	Red
	LS-0141	Reverse 5/0, 13.75"	Gray
	LS-0142	Reverse 4/0, 13.75"	Violet
	LS-0143	Reverse 3/0, 13.75"	Aqua
	LS-0144	Reverse 2/0, 13.75"	Yellow
	LS-0145	Reverse 0, 13.75"	Green
	LS-0146	Reverse 1, 13.75"	Orange
	LS-0147	Reverse 2, 13.75"	Blue
	LS-0148	Reverse 3, 13.75"	Fuschia
	LS-0149	Reverse 4, 13.75"	Black
	LS-0150	Reverse 5, 13.75"	Light Brown
	LS-0151	Reverse 6, 13.75"	Light Green
	LS-0160	Angled 6/0, 13.75"	Red
	LS-0161	Angled 5/0, 13.75"	Gray
	LS-0162	Angled 4/0, 13.75"	Violet
	LS-0163	Angled 3/0, 13.75"	Aqua
	LS-0164	Angled 2/0, 13.75"	Yellow
	LS-0165	Angled 0, 13.75"	Green
	LS-0166	Angled 1, 13.75"	Orange
	LS-0167	Angled 2, 13.75"	Blue
	LS-0168	Angled 3, 13.75"	Fuschia
	LS-0169	Angled 4, 13.75"	Black
	LS-0170	Angled 5, 13.75"	Light Brown
	LS-0171	Angled 6, 13.75"	Light Green
	LS-0180	Straight 6/0, 13.75"	Red
	LS-0181	Straight 5/0, 13.75"	Gray
	LS-0182	Straight 4/0, 13.75"	Violet
	LS-0183	Straight 3/0, 13.75"	Aqua
	LS-0184	Straight 2/0, 13.75"	Yellow
	LS-0185	Straight 0, 13.75"	Green
	LS-0186	Straight 1, 13.75"	Orange
	LS-0187	Straight 2, 13.75"	Blue
	LS-0188	Straight 3, 13.75"	Fuschia
	LS-0189	Straight 4, 13.75"	Black
	LS-0190	Straight 5, 13.75"	Light Brown
	LS-0191	Straight 6, 13.75"	Light Green

CONTACT US

TeDan Surgical Innovations, LLC
 12615 W. Airport Blvd, Suite 200 • Sugar Land, TX 77478
 Ph: 713-726-0886 • Fax: 713-726-0846 • Toll Free: 877-726-0886
 www.tedansurgical.com • sales@tedansurgical.com

© TSI 2011

TSI TeDan Surgical
 Innovations